

SHERWOOD



Four bedroom detached family home with integral garage

This home features...

Beautifully designed SieMatic kitchen by Stuart Frazer with integrated NEFF appliances

Open plan kitchen/diner with bi-fold doors into garden and separate utility

Master bedroom with ensuite and three further double bedrooms

Large family bathroom with separate shower

Generous lounge with bay window

Large turfed and fenced gardens

Integral single garage and block paved driveway

Quality fixtures & fittings throughout

Prestige Collection

SHERWOOD

Four bedroom detached luxury family home with integral garage



GROUND FLOOR

Kitchen / Dining
6.9m x 3.7m (Max)
22' 7" x 12' 1" (Max)

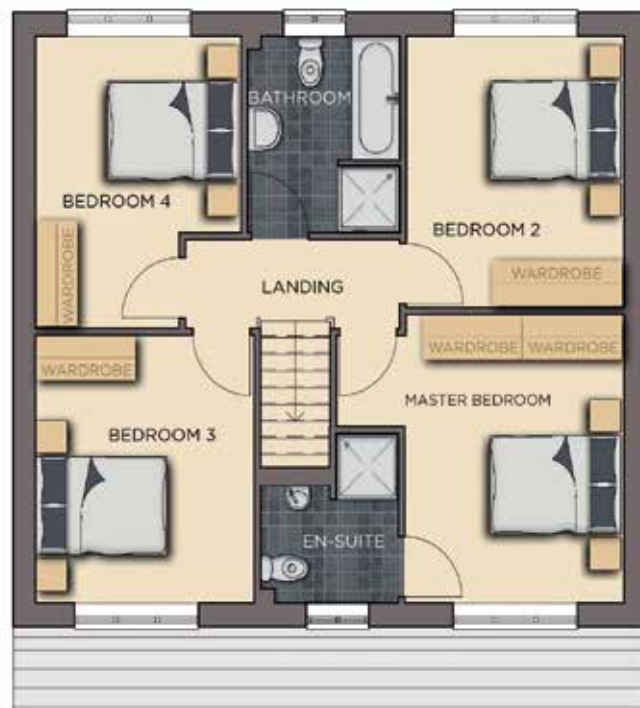
Lounge
4.8m x 3.2m (Max)
15' 9" x 10' 5" (Max)

Hall
2.0m x 5.1m (Max)
6' 6" x 16' 8" (Max)

Utility
2.6m x 1.6m
8' 6" x 5' 2"

WC
1.9m x 0.9m
6' 2" x 2' 11"

Garage
6.0m x 3.0m (Max)
19' 8" x 9' 10" (Max)



FIRST FLOOR

Master Bedroom
3.9m x 4.2m (Max)
12' 9" x 13' 9" (Max)

Bedroom 2
3.7m x 3.2m
12' 1" x 10' 5"

Family Bathroom
2.7m x 2.2m
8' 10" x 7' 2"

Ensuite
2.3m x 2.0m (Max)
7' 6" x 6' 6" (Max)

Bedroom 3
3.7m x 3.2m
12' 1" x 10' 5"

Landing
3.1m x 1.2m
10' 2" x 3' 11"

Bedroom 4
4.0m x 3.0m (Max)
13' 1" x 9' 10" (Max)

Benefits include...

- Beautiful SieMatic kitchen by Stuart Frazer with integrated NEFF appliances & Essentials wine cooler | 5 burner induction hob
- Dining area with bifold doors leading to fully fenced & turfed garden with patio | White Vitra sanitary ware with Hansgrohe fittings | Porcelanosa tiling
- Heated towel rails | Worcester Bosch heating system | USB points, brushed chrome sockets & downlighters | Panelled Oak Shaker doors
- White painted staircase with Oak handrails & newel caps | Neutral decor throughout | Security alarm | Smoke alarm | Fibre optic BT Masterbox
- Front landscaping and turfing | Exterior lighting | Integral single garage | Block paved private driveway
- Electric vehicle charging provision | 10 year warranty... and so much more

++ See Create Homes' specification sheet for full details ++

The dimensions given are approximate only. Artist impressions are for illustrative purposes only.

Non-dual aspect plots shown.

**CONSUMER
CODE FOR
HOME BUILDERS**

www.consumercode.co.uk

create homes
CREATEHOMES.COM

v. CMI